



Oklahoma Partnership for Successful Reentry, Inc.

“Removing Barriers. Connecting Resources. Empowering Solutions.”



Oklahoma Partnership for Successful Reentry, Inc.

Oklahoma Partnership for Successful Reentry, Inc.

PO Box 60433

Oklahoma City, OK 73146-0433

www.OKReentry.org

The statewide grassroots network of faith-based and community organizations, tribes and government agencies that work with inmates, parolees, ex-felons and their families to facilitate rehabilitation and reintegration of the whole man or woman.



Reentry in Oklahoma 2012

OVERVIEW

- **26,000 Oklahomans in Prison**
 - *Average Cost: \$17,000 each, per year*
- **26,000 Oklahomans on Probation**
 - *Average Cost: \$1,026 each, per year*
- **DOC FY2011 Budget: \$462,141,777**
- **1 in 5 Oklahoma men have a criminal record (1 in 4 in urban areas)**

OVERVIEW

- **About 8,500 Oklahomans return from prison each year**
- **About 1 in 3 will return to prison within 3 years (“recidivate”)**
- **Why? MANY BARRIERS - failure to access to community resources, under-employed, stigmatization & alienation, no pro-active reintegration**
- **70+% return to OKC/Tulsa/Lawton**

WHO COMES HOME?

- 90+% of all inmates eventually release
- Most citizens think it's "none"
- About 25%: Career Criminals
 - *aka "sociopaths" or "psychopaths"*
- About 50%: Rehabilitated Citizens
 - *Who deserve a second chance*
- About 25%: Socially dependent/disabled
 - *Due to disabilities, welfare dependent*

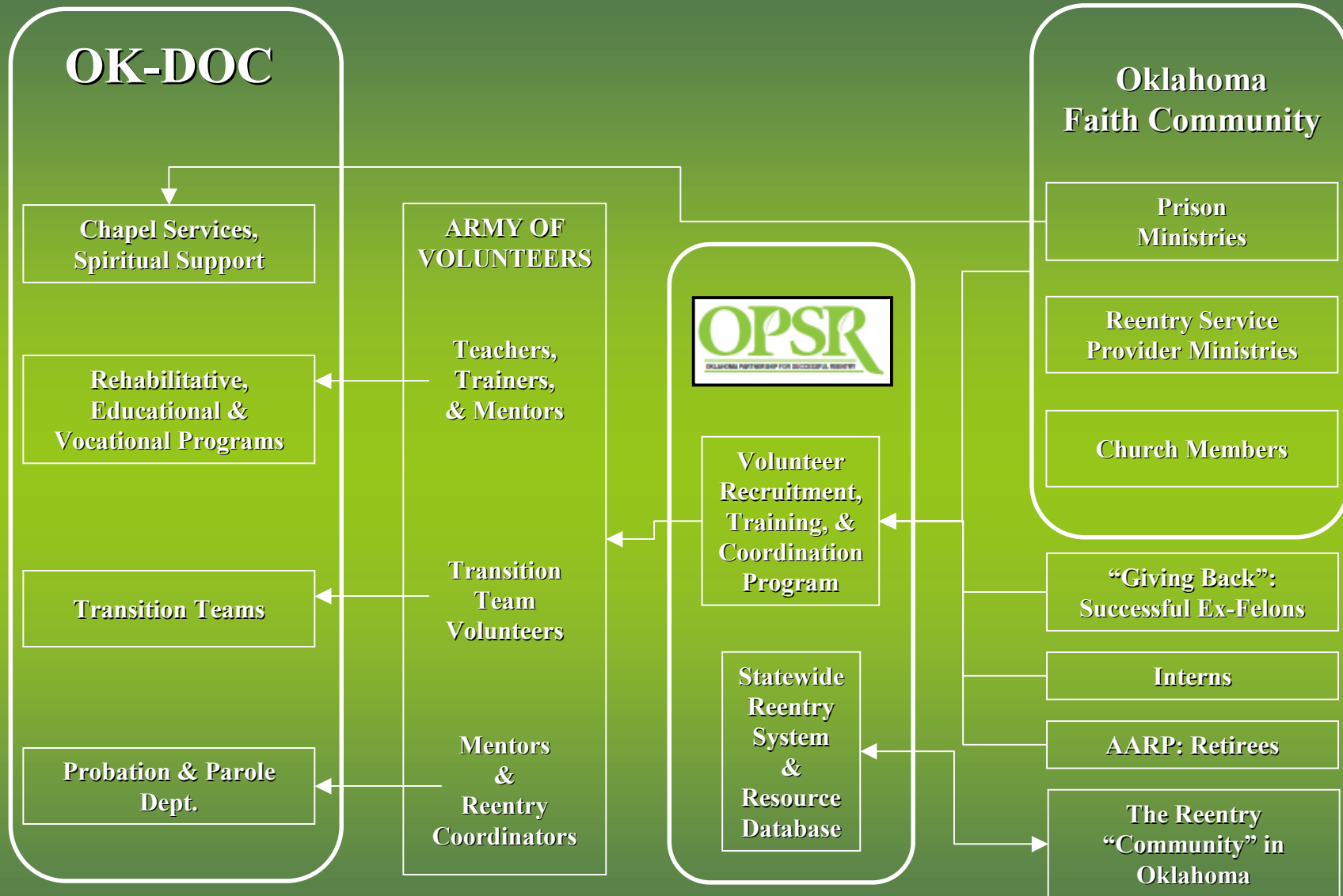


OUR VISION

We envision a society where violent crime -- and crimes of all sorts -- is reduced, and our communities are made safer and enhanced in many ways, because we all come together to eliminate the blight of recidivism by being “Smart on Reentry”



Oklahoma Partnership for Successful Reentry, Inc.





THE BIG PICTURE

“Inside”

Phase 2: DOC implements many reforms to become reentry-centric

Ref.: The 2011 OPRI Model (DOC's current strategic plan)

Phase 4: “SMART ON REENTRY”

OPSR recruits, trains, and coordinates an army of volunteers to provide increased rehabilitation capacity inside the prison system, plus much more

“Outside”

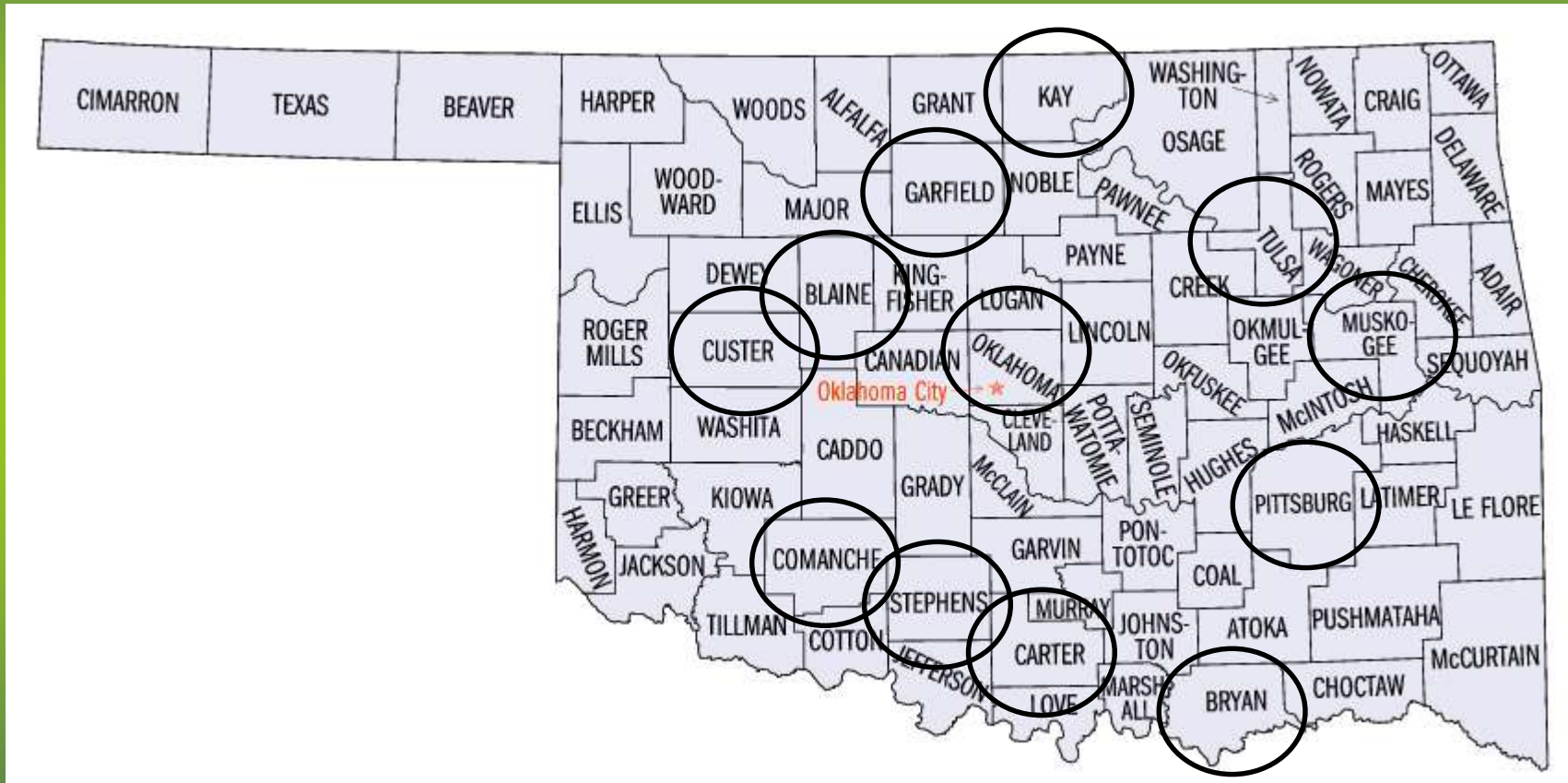
Phase 1: “PRACTICAL ON REENTRY”

OPSR builds network of local reentry coalitions across the state and creates “Reentry Ready Communities”

Phase 3: “CERTIFIED REENTRY NETWORK”

OPSR recruits churches & certifies residential reentry homes statewide

G2 REENTRY COALITION NETWORK





OPSR STRATEGIC INITIATIVES

- *PRI's – Prisoner Reentry Initiative*
Educational & Networking Symposiums
- *Bridges Out of Poverty Campaign*
- *Healing Communities Movement*
- **Oklahoma Reentry Resource Directory (with 2-1-1)**



OPSR STRATEGIC INITIATIVES

- **Reentry Kiosk Pilot Project - Lawton**
- **RIO System is Becoming the “G2” Project**
- **“G2” Reentry Coalition Network**
- **Certified Reentry Housing Network**
- **Certified Reentry Church Network**
- **Inmate-Led Reentry Chapters in Prisons**

“SWOT ANALYSIS”

- **Strengths**
- **Weaknesses**
- **Opportunities**
- **Threats**

STRENGTHS

- **Broad network of proven partners (reentry service providers statewide)**
- **Support of many agencies and community leaders**
- **Strategic Vision: Think Big, Think Long-Term, Solve the Real Problem**

WEAKNESSES

- **Key leaders retiring or changing roles: Who will step up? Who is the next generation?**
- **Lack of a stable *funding model*: lots of potential but no breakthroughs yet**
 - OCFN, OU-OCCE, OCDLA, others
- **Lack of a *clear message* to the reentry community: marketing our “purpose”**

OPPORTUNITIES

- **Strategic window of opportunity to build a system of reentry for the whole state**
- **Capitalize on openness to reentry reform at D.O.C. and other State agencies**
- **Big emphasis on “second chance funding” and innovation at the Federal level**

THREATS

- **Highly political aspects of criminal justice reform in general**
- **Lack of unity in certain sectors of the Oklahoma reentry community**
- **Perceived “competition” among potential collaborators**
- **Lack of a single state-wide strategy**

ONE ADVISOR'S PERSPECTIVE

“What OPSR needs to create is an *advocacy movement* of politically influential people who can influence those with the means to fund the organization.”